



Newsletter

April - June, 2015

Mission:

Platte County Economic Development Corporation promotes and facilitates business and industry endeavors for current and future generations.

Vision:

Platte County Economic Development is a well respected and proactive professionally staffed organization which acts as a positive force in promoting and supporting a positive business environment and our prosperous communities.

We are on the Web :
www.pcedwyo.org

BOARD OF DIRECTORS

Shelby Nelson - Chairman
 PC Memorial Hospital

Thane Ashenurst - Vice-Chair
 Drube Supply

Chuck Ruwart -Treasurer
 Laramie Peak Motors

Bob Ruwart - Secretary
 Bob Ruwart Motors

Jeff Brown
 First State Bank

Mayor Joe Fabian
 Town of Wheatland

Dennis Fischer
 Platte County School District #1

Keith Geis
 Platte Valley Bank

Alan Madsen
 Premier Title Company

Kent Smith
 Smith Broadcasting

Don Smith
 Wheatland REA

Bill Stafford
 Missouri Basin Power Project

Yacco's Corner Bakery & Pizzeria

Dave and Joyce Yacco opened Yacco's corner Bakery on August 1, 2012, offering fresh baked breads, kolatches, pastries, sandwiches and homemade soups. On February 15, 2013 Dave and Joyce started serving pizza, by the slice, whole pizza's and garlic bread. Yacco's Corner Bakery and Pizzeria is a welcomed addition to downtown Wheatland. The kid's from Wheatland High School line up at lunchtime, as well as the many residents and visitors of Wheatland, for a slice of their mouth watering pizza or a delicious sandwich. If you haven't tried their New Jersey style pizza, you need to stop in as soon as possible. You'll be glad you did!

Yacco's Corner Bakery & Pizzeria
 701 9th Street
 Wheatland, WY 82201

New Member Of PCED!

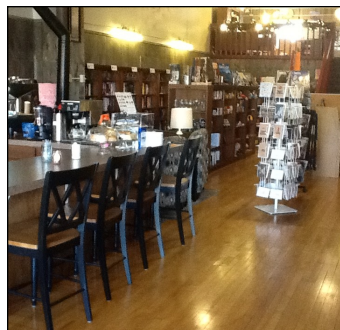
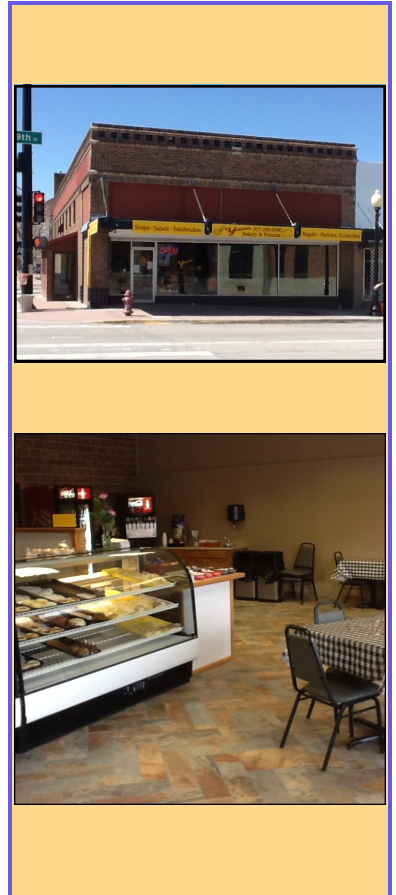
Hours are:

Monday through Friday:
 6:00 a.m. to 2:00 p.m.

Friday Night:
 4:00 p.m. to 8:00 p.m.

Saturday:
 8:00 a.m. to 8:00 p.m.

Sunday & Monday:
 Closed



NEW MEMBER OF PCED



The Wandering Hermit Books & Gifts

The Wandering Hermit Books and Gifts, located at 875 Gilchrist in historic downtown Wheatland, offers over 6,000 titles of books as well as a wonderful variety of unique gifts, Wyoming made products and a large number of children's puzzles and activities. Their beverage bar offers a great variety of coffees, teas and baked goods to enjoy while using their complimentary Wi-Fi and relaxing in one of the cozy seating area's.

If you have not visited The Wandering Hermit yet, stop by to see this quant Books & Gifts store. Dan Brecht opened the doors just in time for the Christmas Season after some major renovations to the former Book Nook. He has crafted a unique environment for enjoying the love of reading and discovering a variety of Wyoming made products. You will find something for yourself or a special gift for someone else in a welcoming, friendly environment.

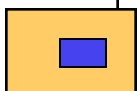
Dan has wanted to own a book store for some time now and has outdone himself with the help of his son Zach, who you will find behind the counter, making coffee or conversing with customers. We are proud to welcome The Wandering Hermit as one of the newest members of PCED.

Helping Business Ideas Become Reality

P.O. Box 988 . 851 Gilchrist, Wheatland, WY 82201

Phone: 307.322.4232 . Fax: 307.322.1629

Website: www.pcedwyo.org . Email: info@pcedwyo.org



Platte County Economic Development Newsletter

April - June 2015



Daphanie Taylor
Executive Director



New Member!

Brian & Deanna
Christensen
OF
Wildcat Feeders
Inc.

Welcome!

New Signage for Our Main Streets

Platte County Main Street and the Town of Guernsey are developing a plan to help businesses address signage needs for their businesses along Wyoming Avenue. The project plans to give interested businesses an opportunity to work with a professional sign designer. The business owner will have an opportunity to design a professional sign that will help sell their business to the public. They will then have the opportunity to build the sign that they created, if that is what they choose to do for their business. It is hoped that this project will be in place later this summer. Wes Reyher, owner of Big Lonely Saddlery, has gotten a head start on the project installing a new sign perpendicular to his new building to draw interest to his business from people traveling down US 26.



What is Economic Development?

The 4 Tiers of Economic Development



2015



Spring Time!

From the Director

As winter is fading away and spring is peaking around the corner, I have a sense of excitement and anticipation. As the saying goes, "for everything there is a season". A season of planting, a season of growth, and a season of harvest. Often, these seasons are happening at the same time in varied stages in different economic areas. Recently we have seen a decline in oil related activities in the area due to the falling cost of oil. It is nice at the gas pump but not so good for those working in the oil industry. So we push forward and work toward diversifying the industries we rely on for a strong and steady economy for our communities. Another saying is, "don't put all your eggs in one basket". Here at PCED we are working toward a vibrant business retention plan for our existing businesses and a sound recruitment plan for a varied and reasonable future of business growth in Platte County. I intend to work with our leaders and citizens to reach this goal. I believe in the saying, "it take a community"! Please take time to stop by and visit with me about your ideas, obstacles, or expansion needs, both business owners and citizens alike. Happy Spring Everyone!

Daphanie Taylor

Platte County Economic Development Membership for 2014-2015

Alliance Construction Solutions	Lynda Lenz-State Farm Agent	Smith Broadcasting
Amazing Monogramming	Mader, Tschacher, Peterson & Company	Source Gas
AVI Engineering	Mike's Printing	Steil Surveying Services
Bloedorn Lumber	Missouri Basin Power Project	Super 8 Motel
Bob Ruwart Motors	Norb Olind Construction	TC Edwards
Dan Brecht	Steve & Vicki Parmley	TDS Trash Collection Services
Dr. & Mrs. William Britz	Peak Wellness Center	The Wandering Hermit
C.H. Brown Company	Platte County Chamber	Thrifty Foods
CME, Inc.	Platte County Hospital Board	Tillman Taco's/dba Taco Johns
Crile Carvey Consulting	Platte County Memorial Hospital	Town of Glendo
Croell Redi-Mix	Platte County Record Times	Town of Wheatland
Dance Wyoming	Platte County School District #1	TurfMaster, LLC
Drube Supply	Platte Valley Bank	Cathy Weaver, CPA
EAS	Premier Title Company	Doug Weaver, Attorney
First State Bank	Quality Discount Liquors	Wheatland Automotive
Frenchman Valley Coop	Reliable Equipment Rental Inc.	Wheatland Golf Club
Frontier Furniture	Seidel Construction	Wheatland REA
Full Cup Enterprises	Shepard Farms	Wildcat Feeders Inc..
Gorman Funeral Home	Sherard Realty	Jeff Wilhelm
Guernsey Marketplace	Sherard, Sherard, Artery & Johnson	Wyoming Business Council
H & H Concrete Construction	Simply Creative	Wyoming Pure Natural Beef
Horton Oil Company	16th Street Car Wash	Wyoming Workforce Center
J. G. Elliott Company		Yacco's Corner Bakery & Pizzeria
Laramie Peak Motors		

**Become a MEMBER of PCED
and have an ECONOMIC IMPACT!**